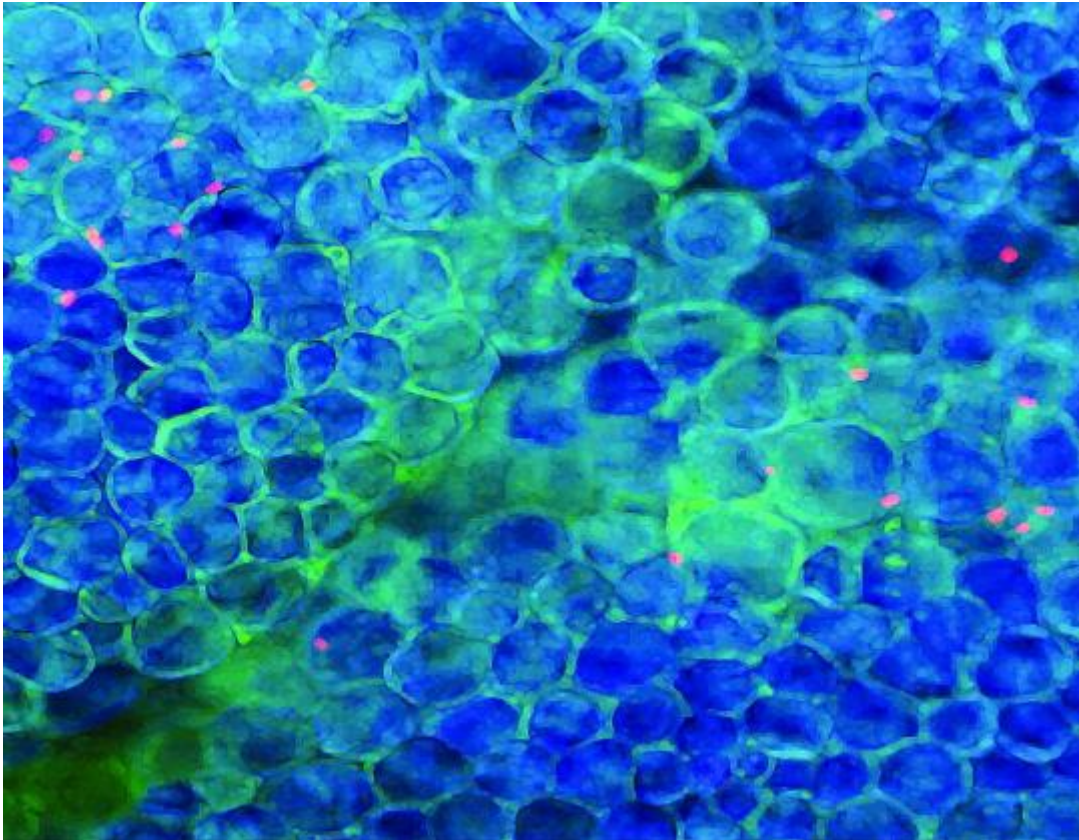


Type 2 immunity in tissue health and disease

OUR WEBSITE HAS MOVED. PLEASE VISIT OUR NEW SITE ^[1]HERE! ^[2]

Our research laboratory studies the function and regulation of type 2, allergic immune-associated lymphocytes, including group 2 innate lymphoid cells (ILC2) and tissue regulatory T (Treg) cells, in tissue health and disease.



Credit
ILC2 (Red) in adipose tissue

Contact Us
UCSF Main Site

© 2015 The Regents of the University of California

Source URL: <http://molofskyimmunolab.ucsf.edu/type-2-immunity-tissue-health-and-disease>

Links

- [1] <http://molofskyimmunolab.ucsf.edu/www.arimolofskylab.org>
- [2] <http://arimolofskylab.org>